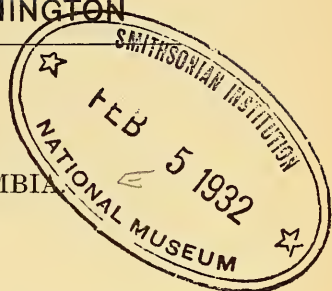


PROCEEDINGS  
OF THE  
BIOLOGICAL SOCIETY OF WASHINGTON

## A NEW PECTEN FROM COLOMBIA

BY WILLIAM HEALEY DALL.



The following species was found in wave formed terraces on the northern shore of the U. S. of Colombia with many other shells, many retaining their natural color.

***Pecten (Chlamys) linki*, n. sp.**

Shell thin, reddish, yellowish, or slate color, generally suffused; inequilateral, slightly oblique; the right valve slightly flatter than the other; major sculpture of 14 to 16 narrow rounded ribs with sub-equal shallow interspaces not channelled; minor sculpture of very fine, slightly raised, close-set concentric lamellae, strongest on the ears; anterior ear narrow, with a deep notch, the etenolium with five denticles; posterior ear wider, both with four or five obsolete radial threads, well separated; interior of the valve with the spaces corresponding to the outer ribs, channelled; hinge line straight, strongly cross-striated; ligamentary pit moderate in size. Left valve with 14 to 18, but usually 16 ribs with wider interspaces; the rounded summits of the ribs with fine radial striation; the concentric minor sculpture as in the right valve; anterior ear smaller than the posterior, with a well-marked rounded sulcus below it; both ears with four or five faint radial threads; interior radially channelled in harmony with the exterior ribbing; where the ears join the disk the crura are prominent. Height of shell 42, width 47, diameter *circa* 12; hinge line 33 mm. U. S. Nat. Mus. Cat. No. 333691.

Collected by Theo. A. Link on the north coast of the U. S. of Colombia, Department of Antioquia, in raised terraces of clay and sand, probably late Pleistocene. Localities: One-half mile west of Rio San Juan; Zapato; and near Cartagena. The species will probably be found living by dredging off the coast. The shells found with this *Pecten* are nearly all recent species. The shell is most nearly allied to the northern *P. concentricus*, which has similar minor sculpture but is much larger and relatively more inflated. Thirty valves were obtained of which only seven were right valves. Nineteen of the valves had 16 ribs, the larger number of the extra or deficient ribs being due to differences in the small lateral riblets.